

Duck with Rice

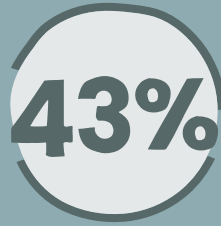
ADULT CAT

SINGLE ANIMAL PROTEIN

Why Duck?

Gently cooked to protect the protein and create a fuller flavour, duck is a lean, nutrient-dense source of protein. It also provides nutrients such as iron, selenium, B vitamins and zinc which contribute towards general health and well-being.

Your Recipe Includes:



Total Duck
A responsibly sourced and highly digestible protein source.



Freshly Prepared Duck
Rich in amino acids, vitamins & minerals, duck is a delicious source of protein.

Goodness Grains

The Goodness Grains range offers a selection of recipes that benefit from the finest freshly prepared protein sources and wholesome grains.

Why Grains?

Grains are naturally high in fibre, helping your pet feel full and satisfied. Wholesome grains provide nutritious and digestible nutrients such as essential fatty acids, vitamins and minerals - important for a complete and balanced diet and to help support a healthy immune system.

Recipe Claims



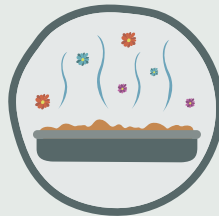
Limited Ingredient Diet

Formulated with a single source of animal protein to help support pets with sensitive digestion.



Sensitive Digestion

With added chicory extract, a prebiotic to help promote the growth of healthy gut bacteria and support digestion.



Reduce Stool Odour

Formulated with added yucca to help reduce stool odour.

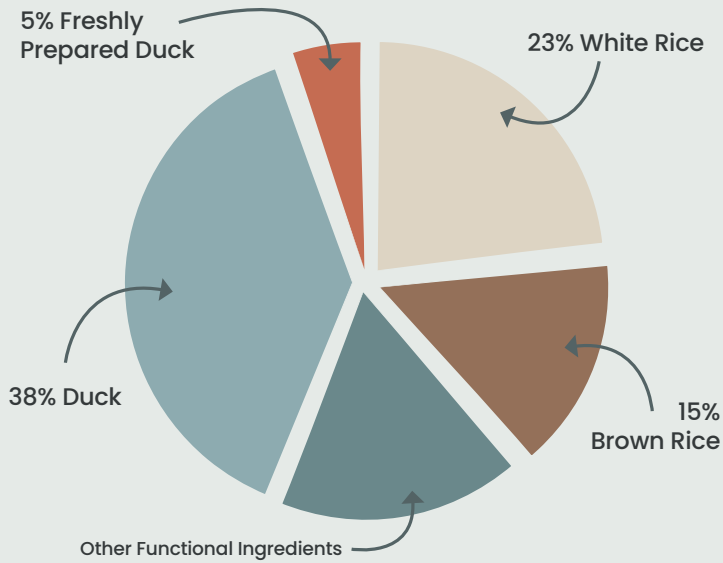


Healthy Skin & Coat

Contains omega 3 essential fatty acids to promote healthy skin and a soft & shiny coat.

COMPOSITION:

Duck 43% (including Dried Duck 28%, Duck Fat 10%, Freshly Prepared Duck 5%), White Rice (23%), Brown Rice (15%), Prairie Meal, Potato Protein, Tomato Pomace, Chicken Stock, Minerals, Omega 3 Supplement (0.7%), Salt, Seaweed, Chicory (0.3%), Dried Carrot, Dried Cranberry, Yucca Schidigera Extract (200 mg/kg)



Brown Rice

Brown Rice is a wholegrain and complex carbohydrate, meaning it's digested more slowly. It is also a rich source of fibre, to help support optimum digestive health.

White Rice

White Rice is a valuable carbohydrates source -essential for your cat's nutrition and to provide them with energy. It also contains vitamins and minerals, including B vitamins which are essential for a healthy nervous system.

ANALYTICAL CONSTITUENTS:

Crude Protein	31%	NFE	34%
Crude Fat	18%	Omega 6 Fatty Acids	3.2%
Crude Fibre	2%	Omega 3 Fatty Acids	0.3%
Crude Ash	8%	Calcium	1.9%
Moisture	7%	Phosphorus	1.3%
Metabolisable Energy	401 kcal/100g		

NUTRITIONAL ADDITIVES PER KG:

VITAMINS: Vitamin A 21635 IU, Vitamin D3 1731 IU, Vitamin E 442 IU

PROVITAMINS: Taurine 1600mg

TRACE ELEMENTS: Zinc (Zinc Sulphate Monohydrate) 96mg, Iron (Iron (II) Sulphate Monohydrate) 72mg, Manganese (Manganous Sulphate Monohydrate) 29mg, Copper (Copper (II) Sulphate Pentahydrate) 12mg, Iodine (Potassium Iodide) 0.48mg

FEEDING GUIDE*

WEIGHT OF CAT (KG)	1 - 2kg	2 - 3kg	3 - 4kg	4 - 5kg	5+kg
GRAMS PER DAY (G)	20 - 35g	35 - 45g	45 - 55g	55 - 65g	65+g

* All cats are different and the guidelines should be adapted to take into account breed, age, temperament and activity level of the individual cat. When changing foods please introduce gradually over a period of two weeks. Always ensure that fresh, clean water is available.

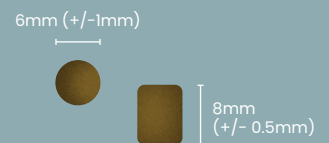


BAG SIZES:

- Please refer to the Partner Portal for more details or contact your Account Manager.
- 18 month shelf life.

KIBBLE SIZE:

- Optimal kibble size and shape for adult cats.
- A crunchy kibble texture.



Important: The information provided in this document is GA Pet Food Partners Ltd interpretation of Regulation No 767/2009 including amending Regulations 2017/2279 and 2018/1903. As with all legislation only courts can decide on the correct interpretation of the law. We would advise that you always seek legal advice when creating/printing new packaging, leaflets or websites. The statutory Analytical Constituents declaration parameters (i.e. Crude Protein, Crude Fat, Crude Fibre, Crude Ash) may be used for declaration purposes along with Moisture. Other parameters are intended as a guide and in order to declare extra figures we suggest that analysis work is carried out to confirm levels more precisely. Formulation updates: As information becomes available and in order to continually meet statutory analytical constituent declarations, formulations may have to be adapted to account for raw material variation and availability. There may also be other reasons outside of our immediate control (including but not limited to force majeure events) which warrant the change of a formulation to improve its suitability.